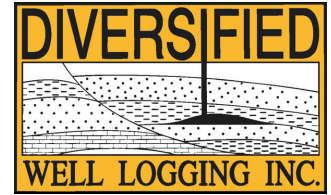


DAS - Enhanced Mud Logging System



Diversified Well Logging, Inc.'s DAS - Enhanced System includes the conventional logging services plus real time enhanced mud logging data acquisition and display system.

Conventional Logging System Includes:

- 2-man, 24 hours per day, 12 hour shifts
- Lithology Identification and Description
- Hot Wire and TC Total Gas System
- Automatic Chromatograph
- Shale Density Plotted
- Drilling Mud Properties
- Oil Fluorescence
- Show Reports
- 1" and 5" Daily Mud Logs via e-mail or fax
- 1" and 5" Final Composites
- 2 Sets 30' Well Cuttings Wet or Dry

DAS - Enhanced System Includes:

(Real Time Enhanced Mud Logging, Data Acquisition and Display)

- Two Remote Monitors - Company man & rig floor (intrinsically safe)
- Date - Current date in month/day/year format
- Time - Current time of day in 24 hour-format
- Depth - Hole depth in feet
- W.O.B. - Current weight on bit in lbs.
- Hook Load - Current hook load in lbs.
- DXC - "D" exponent computer generated
- RPM - Current rotary rate per minute
- Torque - Current torque in amps. Relative to ft/lbs
- ROP (Current) - Rate of penetration of last foot drilled in ft./hr. or min./ft.
- Total Gas - Current hydrocarbon gas value in units
- Pumps #1, #2 & #3 - Current rate & stroke count displayed for each pump
- Drill Strokes - Current "Drill Strokes"
- Lag Strokes - Current "Lag Strokes"
- Pore Pressure - Pore pressure computer generated
- Strokes to Bottom Up - Current number of strokes left until "bottoms up."
- Standpipe Pressure - Current pump rate in PSI
- PVT BBLS - Total pit volume
- Flow In - Gallons per minute
- Flow Out - Percent
- Pit #1, #2, #3, #4 & #5 - Current BBLS in each pit
- Trip - Monitoring in & out / trip tank
- Temperature in & out - Flow line / suction pit
- Casing Pressure - Shut in pressure